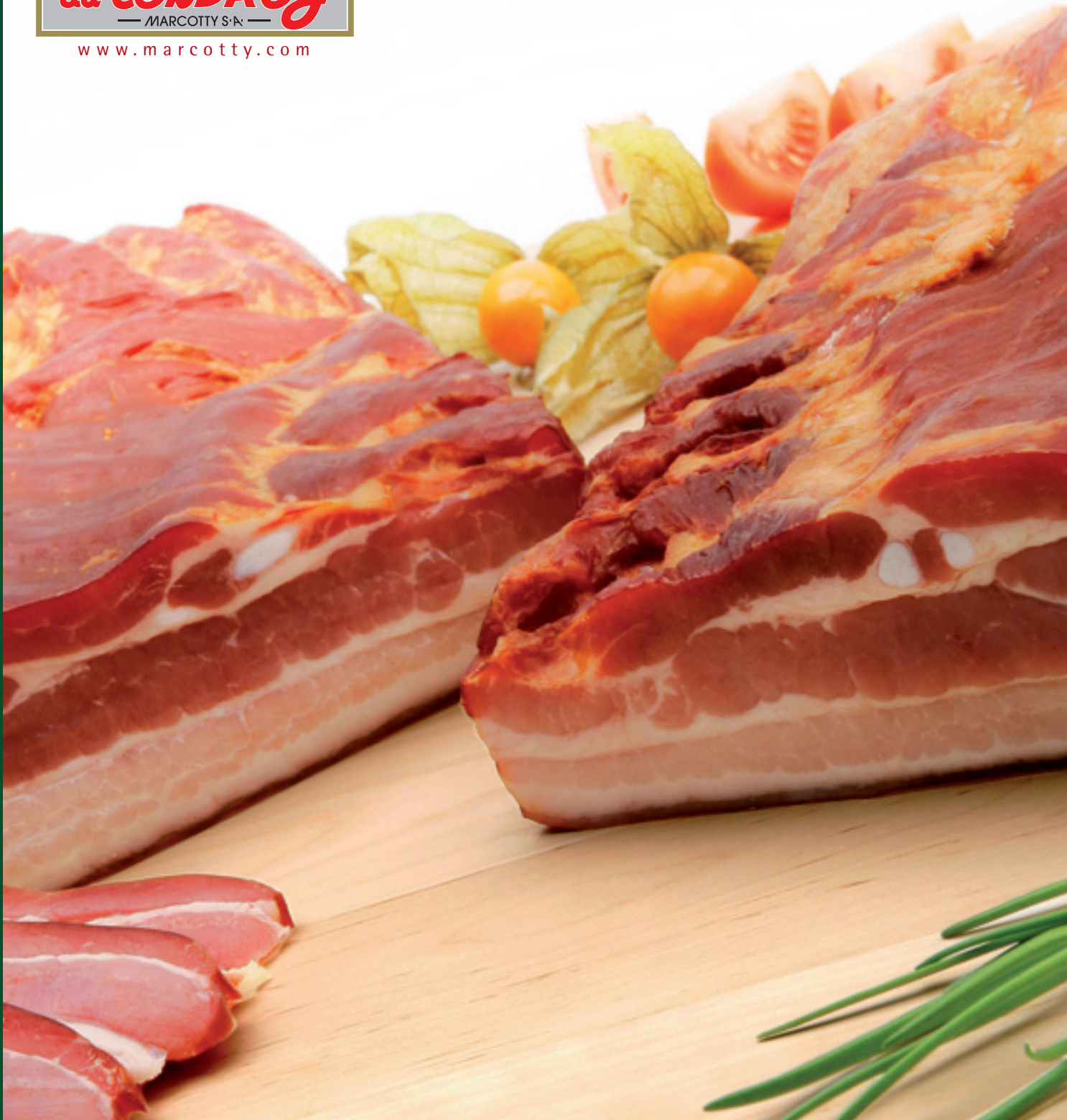




www.marcotty.com



*Poitrines . Spek
Baüchspeck . Bacon*

www.marcotty.com

Poitrines . Spek . Baüchspeck . Bacon



401	Poit. 1/1 Fum. Déli. 4 D S.V. par 3	Gerookte Deli Spek 1/1 Z/zw Z/kn V. Ver. x 3	Ger. Baüchspeck "Deli" 1/1 x 3 st. V/Verp. Z/kn. Z/zw.	Smoked Deli Bacon Whitout Skin by 3 Vacc.	+/- 9.0 Kg
402	Poitrine Fumée Déli. 4 D 1/1 S.V. x 1	Gerookte Deli Spek 1/1 Z/zw Z/kn V. Ver. x 1	Ger. Baüchspeck "Deli" x 1 st. V/Verp. Z/kn. Z/zw	Smoked Deli Bacon Whitout Skin by 1 Vacc.	+/- 3.0 Kg
403	1/2 Poitrine Fumée Déli. 4 D x 2 S.V.	Gerookte Deli Spek 1/2 Z/zw Z/kn V. Ver. x 2	1/2 Ger. Baüchspeck "Deli" x 2 st. V/Verp. Z/kn. Z/zw.	1/2 Smoked Deli Bacon Whitout Skin by 2 Vacc.	+/- 3.0 Kg
404	1/2 Poitrine Fumée Déli. x 2 S.V.	Gerookte Deli Spek 1/2 V. Ver. x 2	1/2 Ger. Baüchspeck "Deli" x 2 st. V/Verp.	1/2 Smoked Deli Bacon by 2 Vacc.	+/- 3.0 Kg
405	1/2 Poitrine Fumée Déli. x 1 S.V.	Gerookte Deli Spek 1/2 V. Ver. x 1	1/2 Ger. Baüchspeck "Deli" x 1 st. V/Verp.	1/2 Smoked Deli Bacon by 1 Vacc.	+/- 1.5 Kg
406	1/2 Poitrine Fumée Supérieure x 1 S.V.	Gerookte "A" Spek 1/2 V. Ver. x 1	1/2 Ger. Baüchspeck "A" x 1 st. V/Verp.	1/2 Smoked "A" Bacon by 1 Vacc.	+/- 1.5 Kg
407	1/2 Poitrine Fumée Supérieure x 2 S.V.	Gerookte "A" Spek 1/2 V. Ver. x 2	1/2 Ger. Baüchspeck "A" x 2 st. V/Verp.	1/2 Smoked "A" Bacon by 2 Vacc.	+/- 3.0 Kg
408	Poit. Fumée Supérieure Bloc S.V.	Gerookte "A" Spek Blokjes V. Ver.	Ger. Baüchspeck "A" Block V. Verp.	Smoked "A" Bacon Block Vacc.	+/- 750 g
411	Pancetta 1/1 Vrac	Pancetta 1/1 Vrac	Pancetta 1/1	Pancetta 1/1	+/- 4.0 Kg
412	Pancetta 1/1 S.V.	Pancetta 1/1 V. Ver.	Pancetta 1/1 V. Verp.	Pancetta 1/1 Vacc.	+/- 4.0 Kg
413	Pancetta 1/2 S.V.	Pancetta 1/2 V. Ver.	Pancetta 1/2 V. Verp.	Pancetta 1/2 Vacc.	+/- 1.5 Kg
415	1/2 Poitrine Salée Déli. x 1 S.V.	Gezoute Deli Spek 1/2 V. Ver. x 1	Gesaltz "Deli" Bauchspeck x 1 V. Verp.	1/2 Salted Deli Bacon by 1 Vacc.	+/- 1.5 Kg
417	1/2 Poitrine Salée Supérieure x 1 S.V.	Gezoute "A" Spek 1/2 V. Ver. x 1	Gesaltz "A" Bauchspeck x 1 V. Verp.	1/2 Smoked "A" Bacon by 1 Vacc.	+/- 1.5 Kg
435	1/2 Poitrine Fumée Sélection x 1 S.V.	Gerookte "B" Spek 1/2 V. Ver. x 1	1/2 Ger. Baüchspeck "B" x 1 st. V/Verp.	1/2 Smoked "B" Bacon by 1 Vacc.	+/- 1.7 Kg
437	Poitrine Fumée Supérieure 1/1 x 1 S.V.	Gezoute "A" Spek 1/1 V. Ver. x 1	Ger. Baüchspeck "A" 1/1 x 1 st. V/Verp.	Smoked "A" Bacon 1/1 Vacc.	+/- 3.0 Kg
465	Poitrine Fumée Déli. 4 D tranchée 2 mm. S.V.	Gerookte Deli Spek Gesneden 2 mm. V. Ver	Ger. Geschnittener Bauchspeck 2 mm. V/Verp.	Sliced Deli Breakfast Bacon 2 mm Vacc.	+/- 1.4 Kg